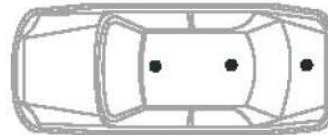




COMBI ANTENNAS GSM/WIFI

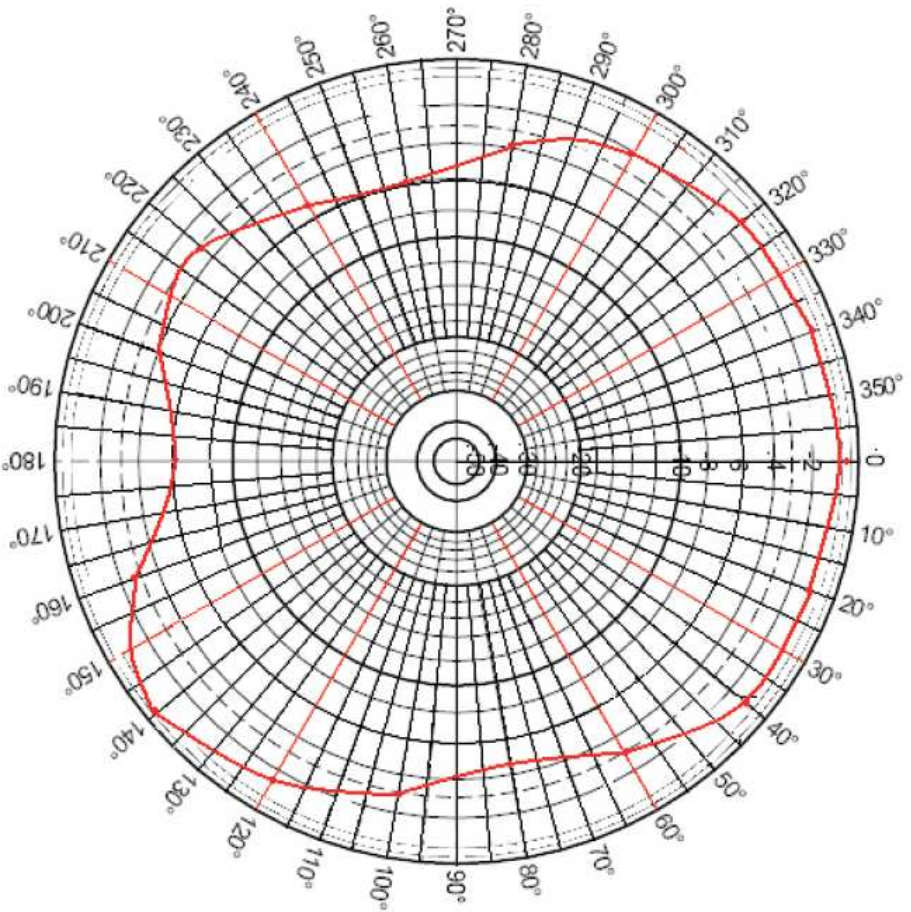


instalation

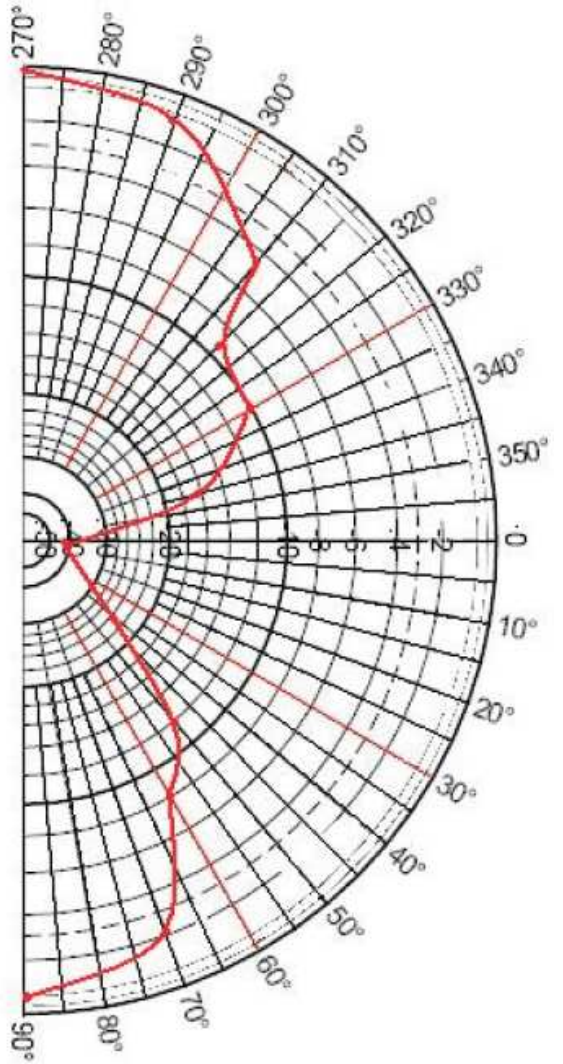
- GPRS
- WIFI
- UMTS
- Bluetooth
- GSM

Mounting position	Any Metallic surface
Impedance	50 ohms
Frequency	AMPS(824-894 Mhz) / GSM~GPRS 900MHz , 1800 MHzPCN 1900 MHz / UMTS 2,1GHz/ WIFI 2400 Mhz
Polarization	Horizontal
Gain MHz : dBi	900 : 0 / 1800 : 0 / 2100 : 0 / 2400 : 2
VSWR	<2:1 Max
Cable Type	2.5m RG174 All cable length available on request
Connector	SMB (f)for GPS ;FME (f) for GSM All connectors available on request
Housing	75mm x 80mm
Operating temperature	-40°C to + 85°C
Installation	Body Mount

COMBI ANTENNAS GSM/WIFI



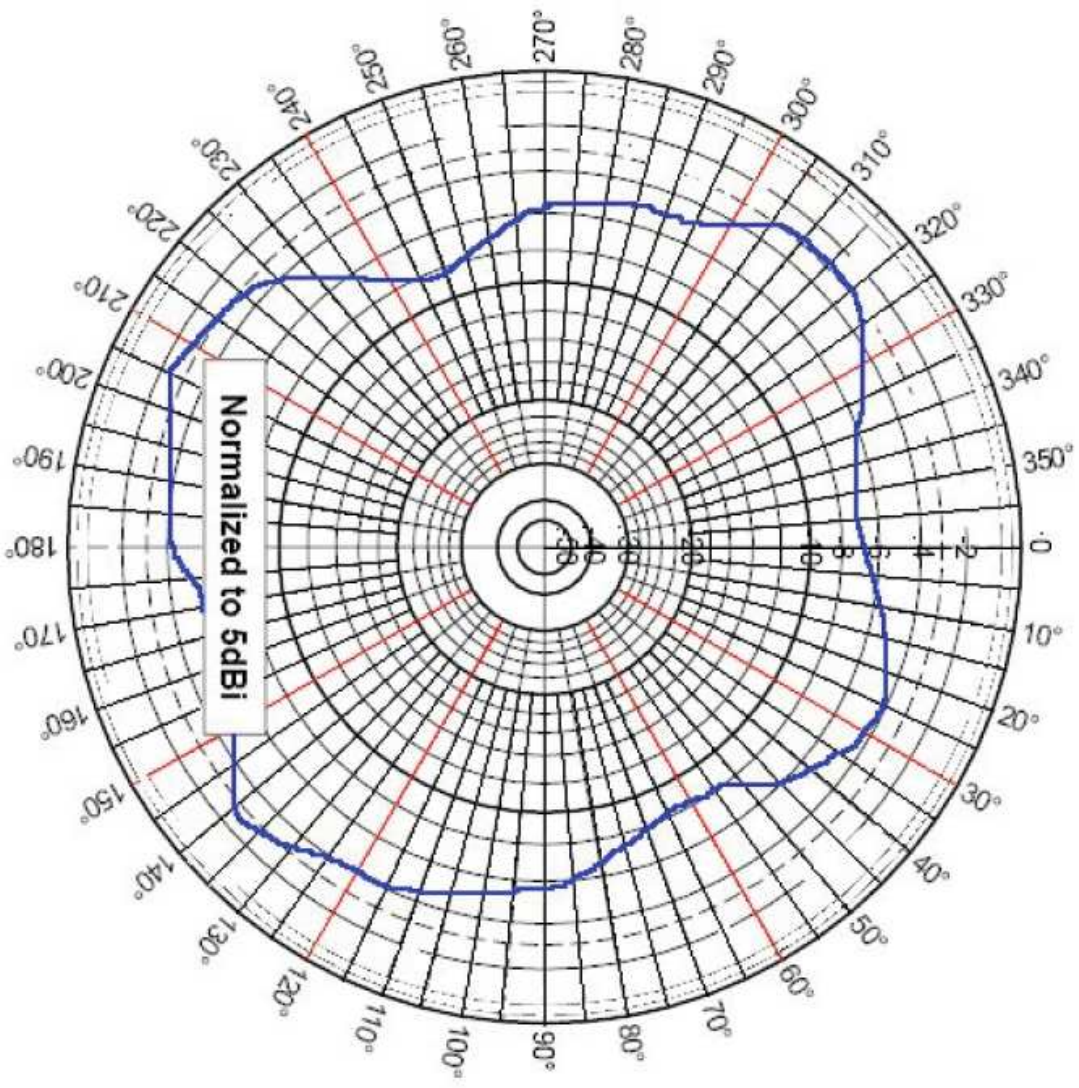
Azimuthal Pattern (X, Y or E-Plane)



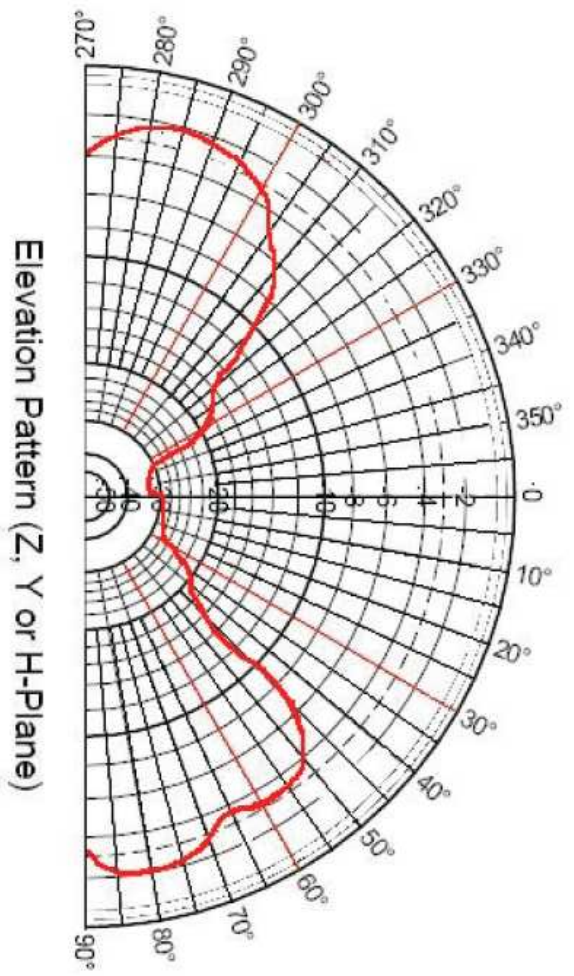
Elevation Pattern (Z, Y or H-Plane)

WIFI ANTENNA

COMBI ANTENNAS GSM/WIFI



Azimuthal Pattern (X, Y or E-Plane)



Elevation Pattern (Z, Y or H-Plane)