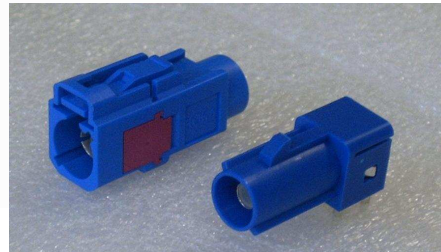
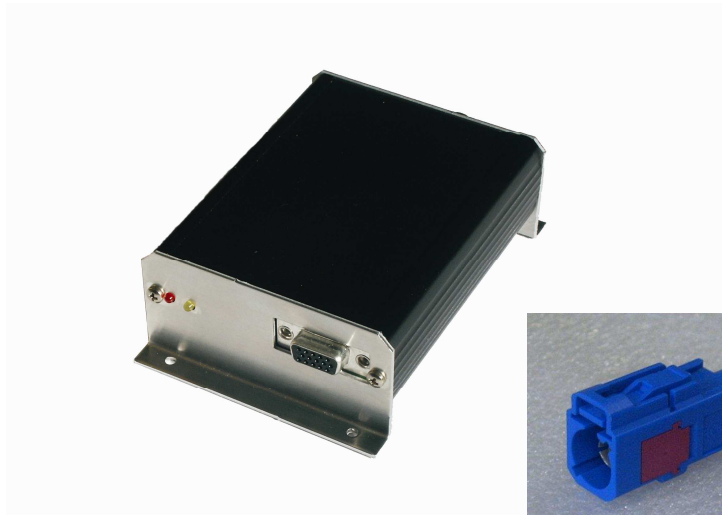




**GPS Localisation / GPRS communication**  
**Linux or windows CE OS**  
**USB // ETHERNET // RS232**



**Dual SIM**  
**FAKRA**

<b>Processor</b>	ARM 9—AT91 serie from ATMEL
<b>GSM Module</b>	Hilo Module from SAGEM
<b>GPS Module</b>	65 channels acquisition / Open sky cold start 29 seconds Signal detection better than -158 dbm Low power 30 mA MAX
<b>Memory :</b>	NAND Flash 256 MO RAM 63 MO
<b>Ports</b>	2 * RS232 serial port 1 Ethernet 3 * TOR inputs 1 open collector output SD (SDHC2.0) / MMC
<b>Optional ports ( additional board )</b>	1 * USB HOST 1 * USB SLAVE
<b>Operating temperature</b>	- 20 to +55°C
<b>SIM Cards</b>	Dual SIM card support
<b>Supply voltage</b>	10 to 18 V dc
<b>Sizes</b>	110 mm 110 mm APROX
<b>Output connectors</b>	FAKRA for antennas MICROFIT for communication and voltage



**GSM Module characteristics  
SAGEM HILO  
27 \* 27 \* 3.6 mm h**

GSM, GPRS Class 10  
Full Quad band Support: 850/900/1800/1900 MHz  
Extremely small Form Factor ( 27mm X 27 mm X 3.6 mm)  
Extremely light weight (< 4 g.)  
Extended operational temperature range (from -40°C up to +85°C)  
Very low power consumption (< 1,5 mA in Idle mode)  
Complete embedded Internet connectivity  
Ruggedized design for automotive & industrial applications

**GPS Module**

- GPS receiver in 10mm x 10mm x 1.2mm size
- Tests 8 million time-frequency hypothesis per sec
- Open sky cold start 29 second
- Signal detection better than -158dBm
- Reacquisition sensitivity -155dBm
- Accuracy 2.5m CEP
- ~30mA in full power continuous navigation
- Multipath detection and suppression
- Data logging with external SPI serial Flash
- Supports active or passive antenna
- LGA44 package with 0.8 pitch
- Pb free RoHS compliant

