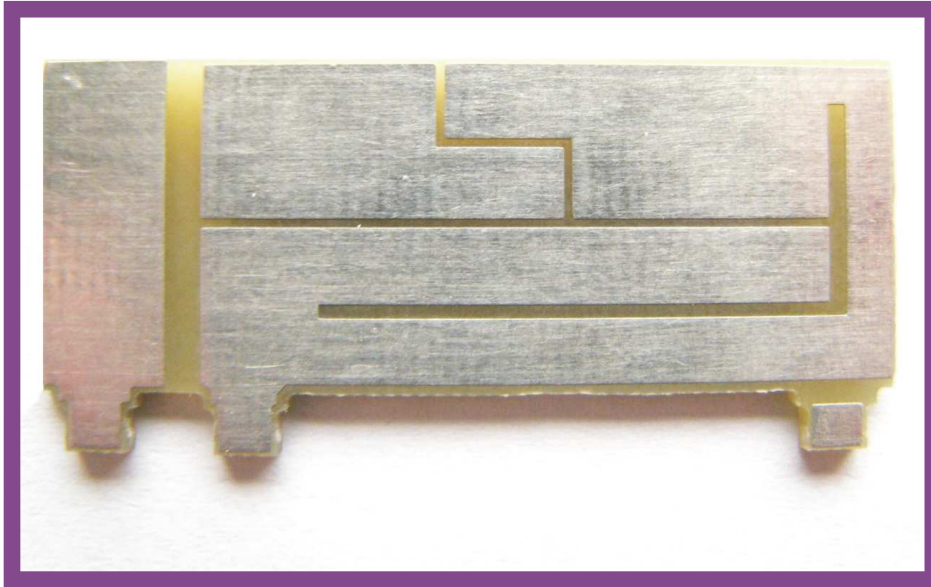




GSM / GPRS MODULE ANTENNAS

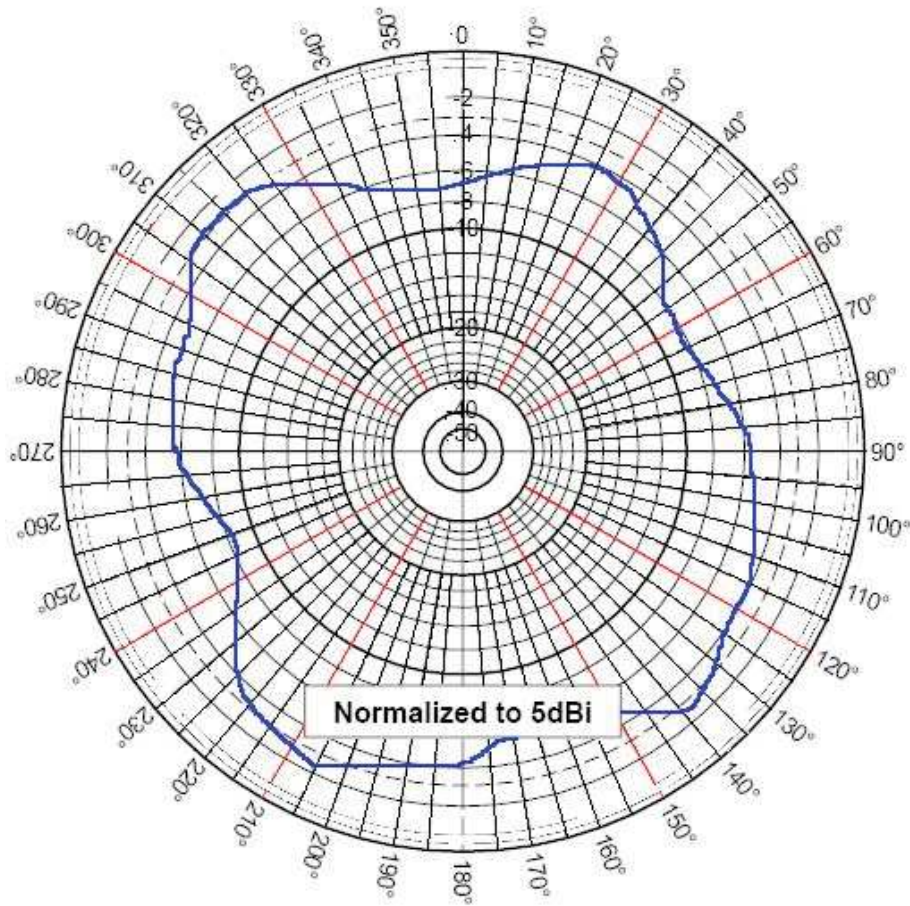


- GSM
- GPRS
- UMTS
- WIFI
- Bluetooth

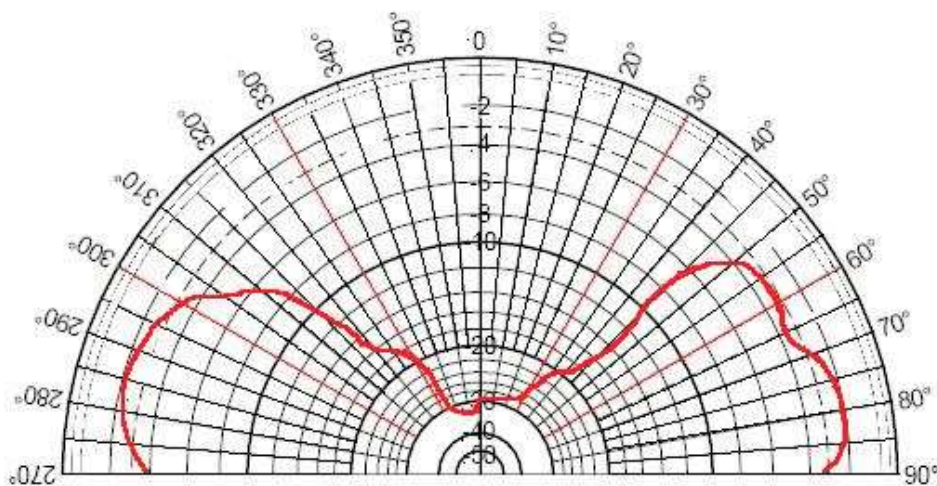
Impedance	50 ohms
Frequency	AMPS 824~894 MHz / GSM 900, 1800 MHz PCS1900 MHz / UMTS 2,1GHz Wifi & Bluetooth 2,4GHz / 5.0 GHz / 5.8GHz
Polarization	Vertical
Gain MHz : dBi	0 dBi
VSWR	900 MHz <1.5:1 1800 MHz <1.2:1 2100 MHz <1.5:1 2400 MHz <2.0:1 5GHZ, 5.8 GHz <2.0:1
Power Handling	25 Watt
Connector	All connectors available on request
Housing	42mm x 16mm (mounted) 42mm x 19mm (overall)
Working temperature	-40°C to + 85°C
Installation	PCB mounted



2,4 GHz



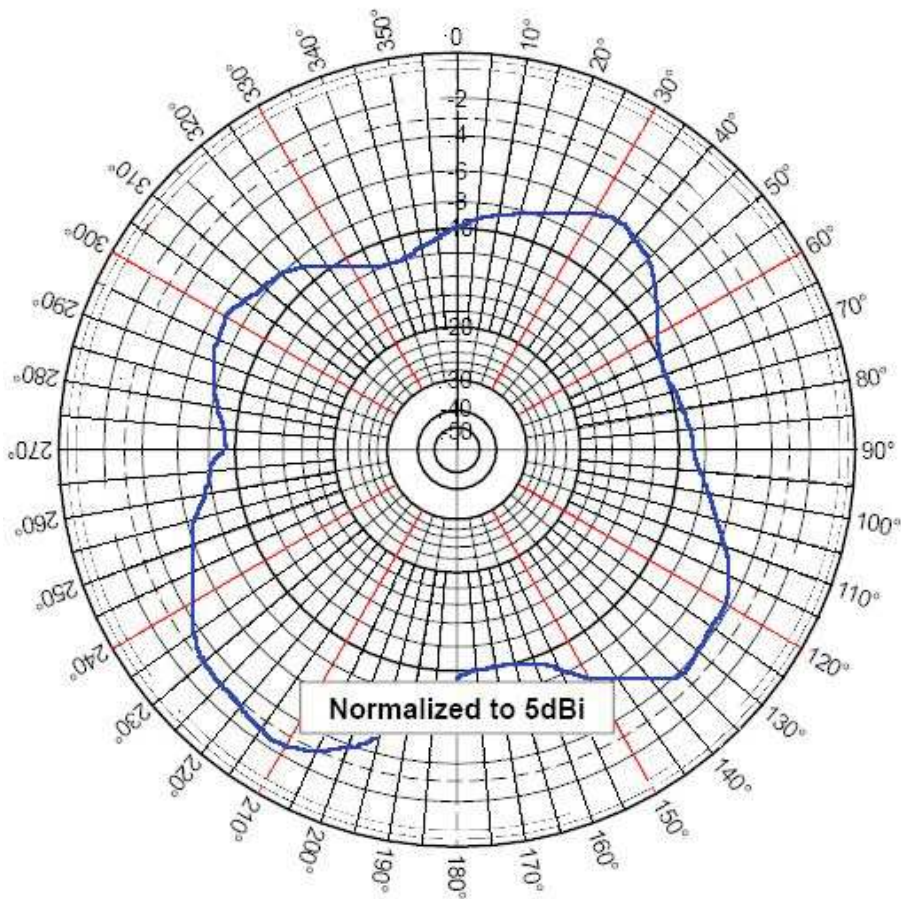
Azimuthal Pattern (X, Y or E-Plane)



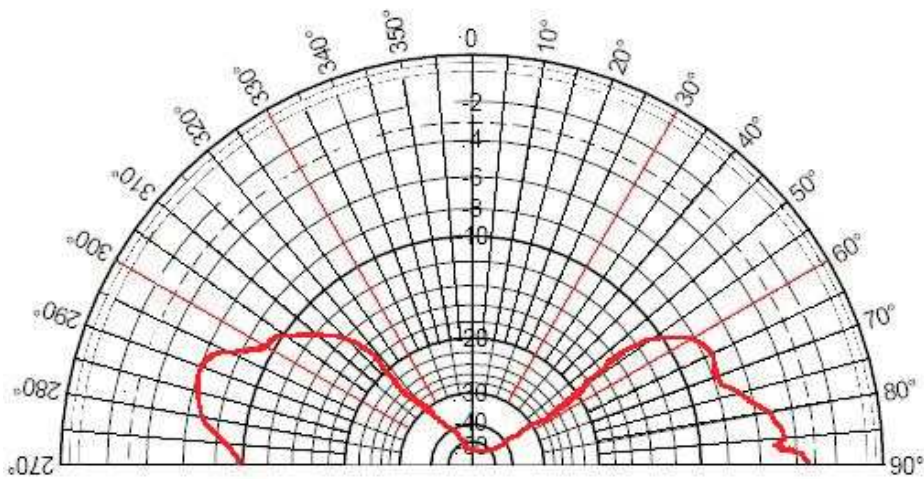
Elevation Pattern (Z, Y or H-Plane)



5 GHz



Azimuthal Pattern (X, Y or E-Plane)



Elevation Pattern (Z, Y or H-Plane)



GSM

