



2009 Product catalogue

www.giga-concept.fr

les Modules Modules Modules

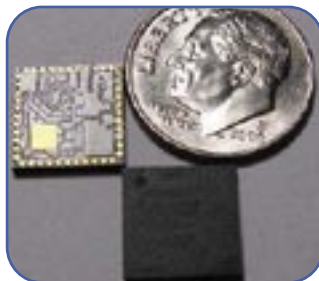
Press release...



Le plus petit module GPRS jamais vu sur le marché.

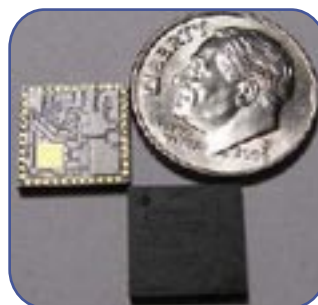
Sagem vient d'introduire ce qu'il considère comme le plus petit module GPRS jamais commercialisé dans le monde. Aussi petit qu'un timbre-poste (27x27mm pour un poids de 4g), ce module appelé HiLo est destiné aux applications M2M. Il s'agit d'un module GPRS classe 10 quadribande avec les couches de protocole TCP/IP entièrement embarquées. Son design compact convient parfaitement aux applications caractérisées par des contraintes d'espace importantes, telles que les terminaux de paiement ou les équipements de surveillance ou de sécurité, par exemple. Le module HiLo est aussi caractérisé par une faible consommation (moins de 1,5mA en mode veille) et sa possibilité de fonctionner sous une tension de 3,2V. Il peut également couvrir les applications automobiles grâce à sa gamme de température étendue (de -40°C à +85°C) et sa haute résistance aux vibrations.

Modules



GIGA-634LP-C

| |
|---------------------------------------|
| GPS receiver in 10mm x 10mm Size |
| 51 Channel acquisition engine |
| 14 Channel track engine |
| Open sky cold start 29 second |
| Signal detection better than -158 dBm |
| Reacquisition sensitivity -155 dBm |
| ~30mA in tracking and navigation mode |
| RoHS compliant |
| Temperature: -20°C to +70°C |



GIGA-634LP-I

| |
|--|
| GPS receiver in 10mm x 10mm x 1.2mm size |
| 51 Channel acquisition engine |
| 14 Channel track engine |
| Open sky hot start 1 second |
| Open sky cold start 29 second |
| Signal detection better than -158dBm |
| Reacquisition sensitivity -155dBm |
| ~30mA in tracking and navigation mode |
| RoHS compliant |
| Temperature: -35°C to 85°C |



HiLo Module

| |
|---|
| Very small Form Factor (27mm x 27 mm X3.4 mm) |
| GSM, GPRS Class 10 |
| Quad band 850 MHz / 900 MHz / 1800 MHz / 1900 MHz |
| Extended temperature range (from -40°c up to +85°c) |
| Low power consumption (< 1.5 mA in Idle mode) |
| Ultra high Internet connectivity |



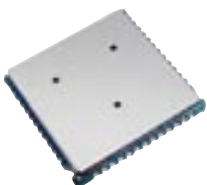
MO 300

| |
|---|
| GSM, GPRS EDGE Class 10 (43mm x 34mm x 3,2mm) |
| RoHS compliant |
| Quad band 850 MHz / 900 MHz / 1800 MHz / 1900 MHz |
| Ruggedized Design for Automotive & Industrial application |
| Low power consumption (< 2.0 mA in Idle mode) |
| Digital Audio interface |
| Temperature sensor and Antenna detection |
| Ultra high connectivity |
| TCP-IP stack, MMS Client, USB 2 |



MO 300E LINUX BASED PLATFORM

| |
|---|
| GSM, GPRS EDGE Class 10 (43mm x 34mm x 3.2mm) |
| Quad band 850 MHz / 900 MHz / 1800 MHz / 1900 MHz |
| Ruggedized Design for Automotive & Industrial application |
| Low power consumption (< 2.0 mA in Idle mode) |
| Digital Audio interface |
| Temperature sensor and Antenna detection |
| Ultra high connectivity |
| TCP-IP stack, MMS Client, USB 2 |



HILO NC Connectorless

| |
|---|
| GSM, GPRS Class 10 |
| SMT mounted modules |
| Quad band 850 MHz / 900 MHz / 1800 MHz / 1900 MHz |
| Extended temperature range (from -40°c up to +85°c) |
| Low power consumption (< 1.5 mA in Idle mode) |
| Extremely small Form Factor (24mm x 24 mm x 2.5 mm) |
| Ultra high connectivity |
| TCP-IP stack, MMS Client, USB2 |

WIFI - 3G HSDPA

Modules



EMP-9701

WIFI b,g,n (300 Mb/s)

- Up to 300Mbps wireless data transfer rate
- Up to 12X Faster & 4X Farther than 802.11g
- Supports 2T3R Radios
- Enable superior reception from farther distances
- Backward Compatible with 802.11g and 802.11b Networks



EMP-8602

WIFI a,b,g (2,4 and 5,8 GHz)

- High Speed Data Rate up to 54Mbps
- High Output Power up to 26 dBm & 20 dBm - Advanced Power Management
- Support eXtended Range technology
- 802.11i security specifications, provides WPA/WPA2 and WEP 64/128 bit encryption
- Site Survey Utility
- 802.11e Standard Support
- Extended operating Temperature Range -40 to +85°C



EU-850D

3G HSDPA

- 7.2 Mbps HSDPA PCI Express Mini Card
- Embedded Module with Integrated SIM Slot
- Tri-band HSDPA / UMTS - 850 MHz / 1900 MHz / 2100 MHz
- Quad-band EDGE/GPRS - 850MHz / 900 MHz / 1800 MHz / 1900 MHz
- Two-channel Receiver Diversity on HSDPA / UMTS 2100 MHz bands
- Size 50,8 mm x 29,9 mm x 6,4 mm



EU-870D

3G HSDPA

- 7.2 Mbps HSDPA PCI Express Mini Card
- Embedded Module with Receive Diversity & Equalizer
- Tri-band HSDPA / UMTS - 850 MHz / 1900 MHz / 2100 MHz Quad-band EDGE/GPRS - 850MHz / 900 MHz / 1800 MHz / 1900 MHz
- Two-channel Receiver Diversity on HSDPA / UMTS 2100 MHz bands
- Size 50,8 mm x 29.9 mm x 6.4 mm

Highlights

This module is as small as a stamp : 27 X 27 mm
 The SAGEM HILO GPRS module is a class 10 with embedded IP stacks.
 Really low power with 1.5mA MAX in idle mode.
 Working with 3.2V this is the solution for all new mobile applications.
 Extended temperature -40 to 85°C.
 You can find all the specifications on our website.



