

AP11-868

Antenne dédiée LoRA | Sigfox | EnOcean

- Dimensions : 198 mm +/- 3
- Gain : 2 dBi
- Câble et connecteurs sur mesure à la demande

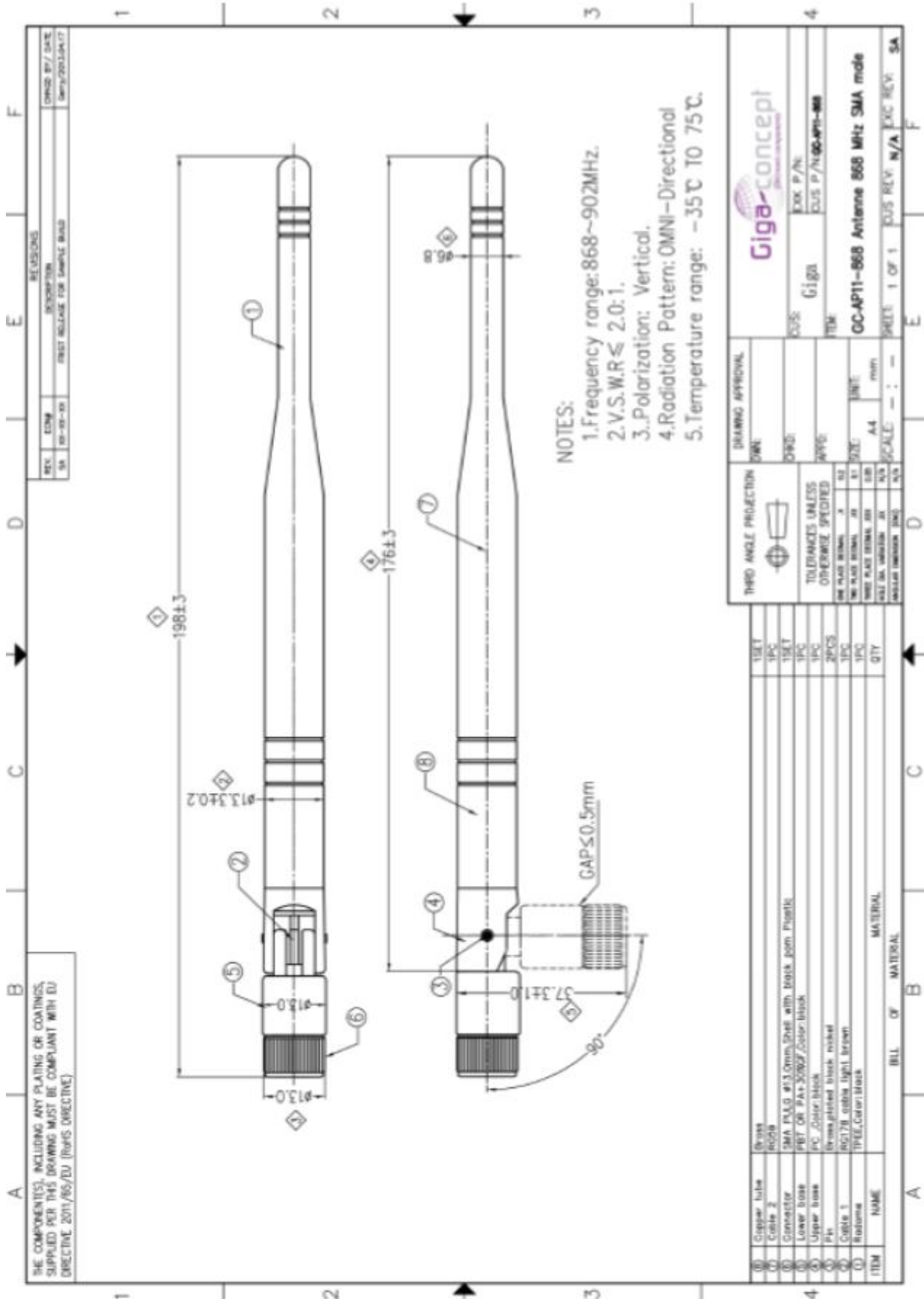


SKU: AP11-868



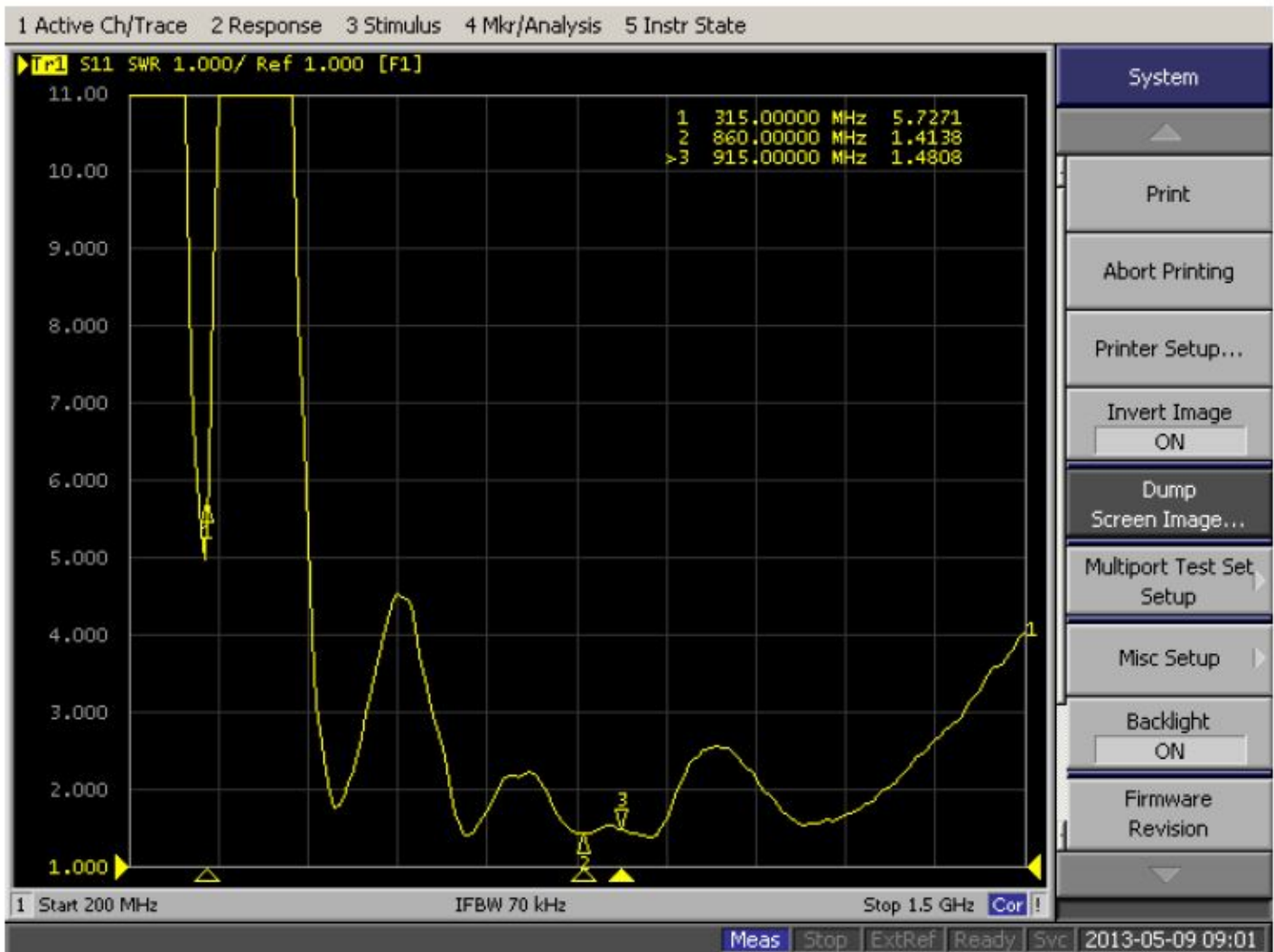
Specifications

Frequencies	868-902MHz, 315MHz on request
Impedance	50 Ohms
Polarization	Omni-directionnal
Gain	2 dB
V.S.W.R.	2.0:1
Antenna type	External antenna
Connector type	SMA (male)
Antenna dimensions	198mm +/- 3
Antenna color	Black
Operating temperature	-35°C to +75°C



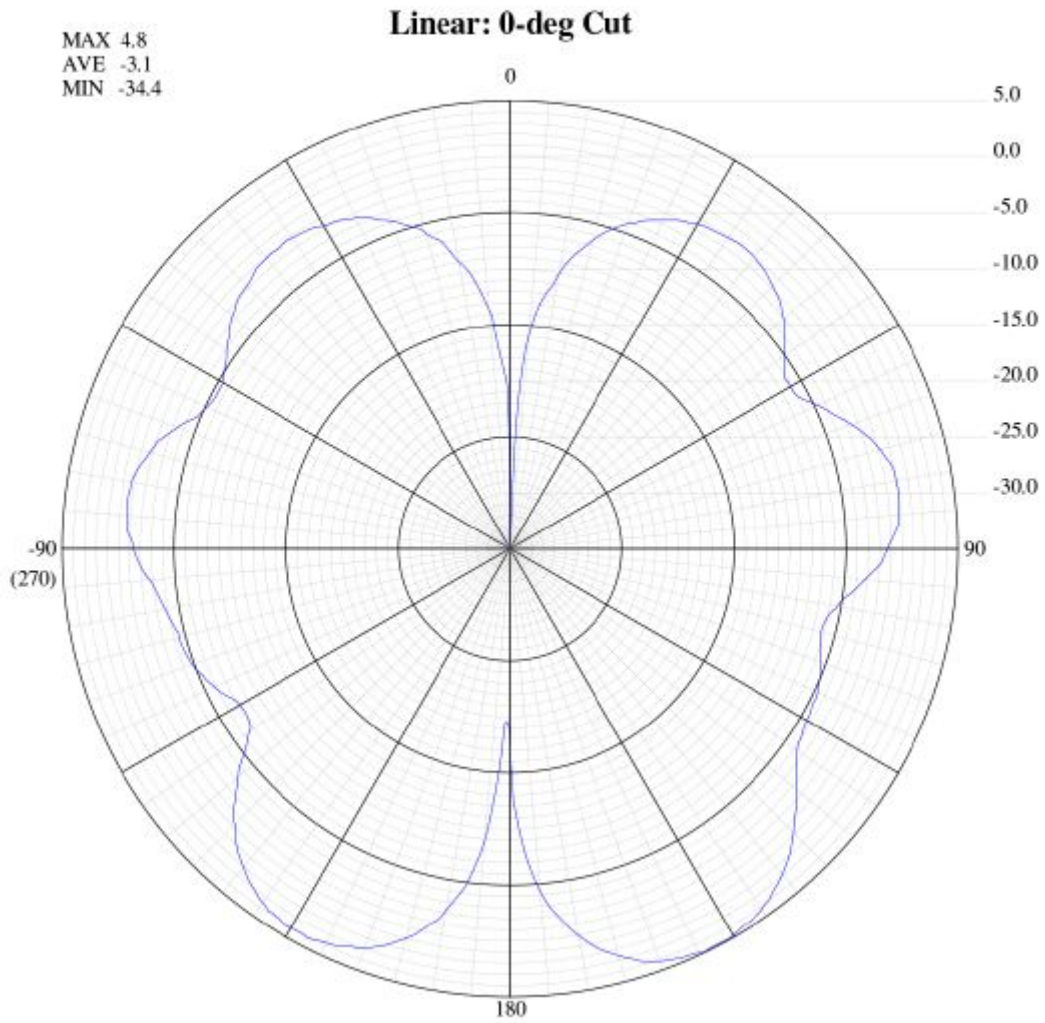
Measurement

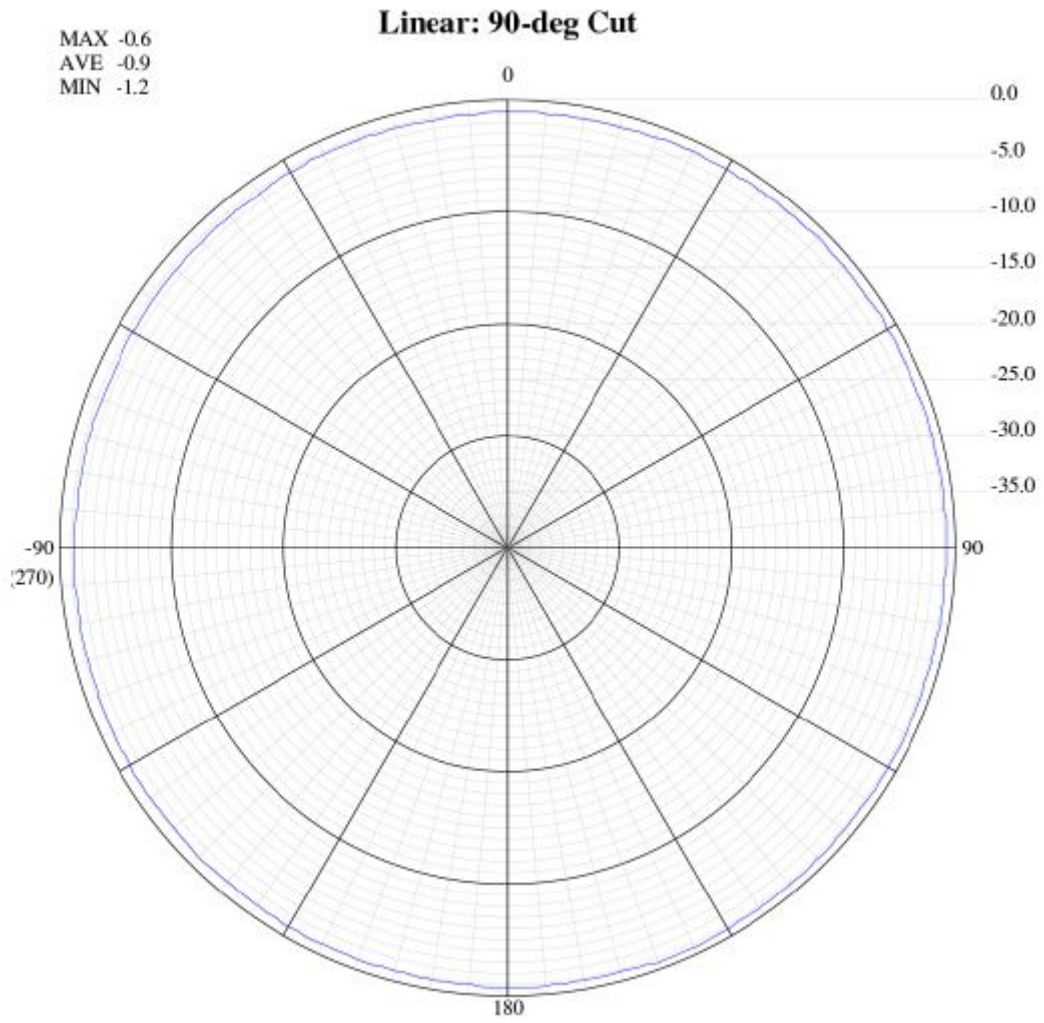
Frequency



Scanner system

Far Field Patterns, Frequency: 0.8600





Far Field Patterns, Frequency: 0.9150

