



GC-35-4-AW

Antenne Ermes 169 MHz

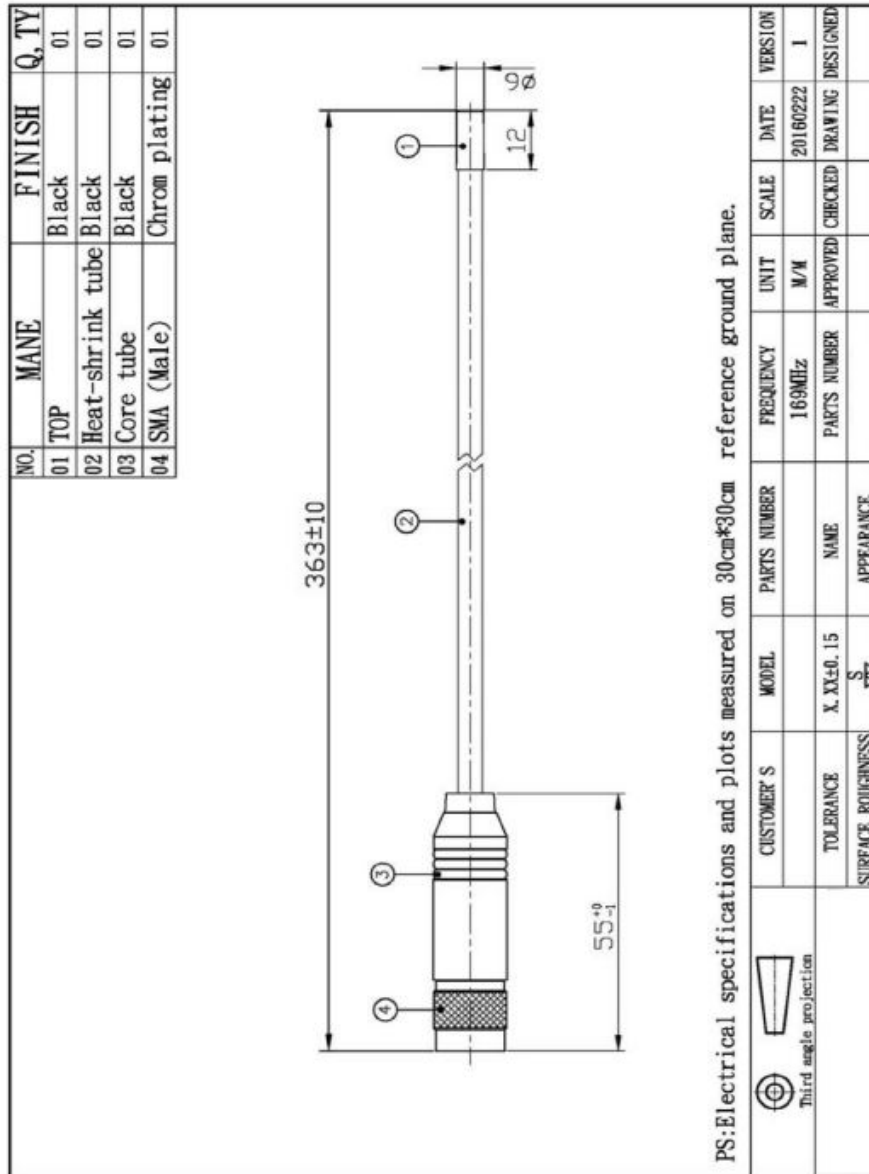
- Dimensions : 363 mm +/- 10
- Câble et connecteurs sur mesure à la demande

SKU: GC-35-4-AW



Specifications

Frequency band	169MHz
Nominal impedance	50 Ohms
Polarization	Vertical
V.S.W.R	2.0:1
Antenna type	External antenna
Touch type	Screw type
Connector type	SMA male
Dimensions	363mm +/- 10
Color	Black
Operating temperature	-20°C to +60°C
Storage temperature range	-30°C to +70°C



MEASUREMENT

Return loss, V.S.W.R. and Smith Chart



